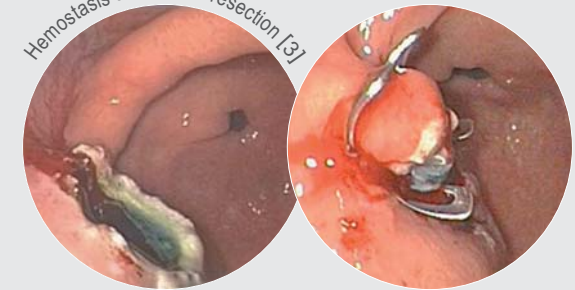
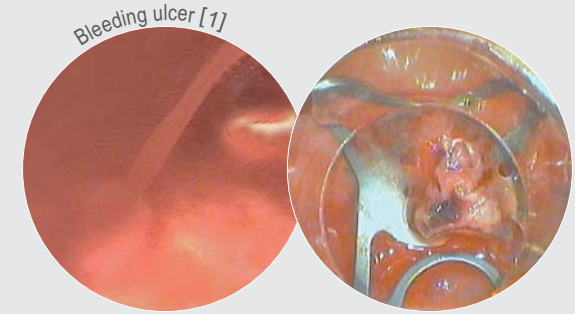
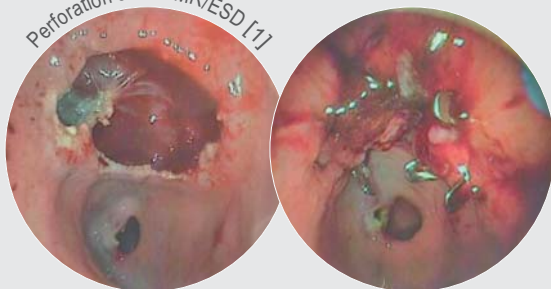
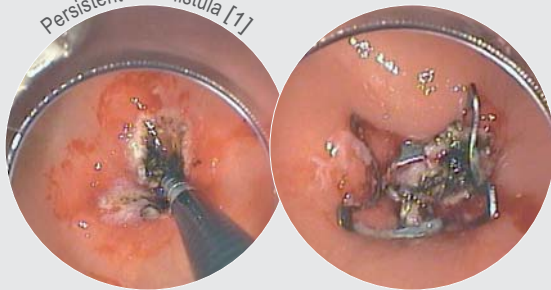
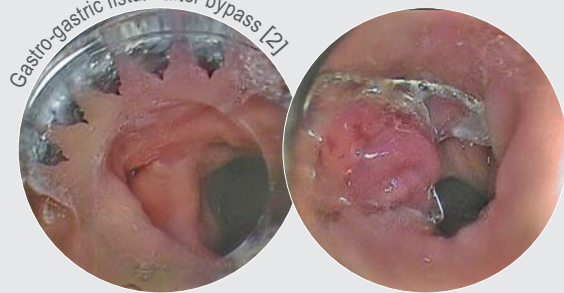


Use and indications of the OTSC® system



CAUTION!

When using grasping forceps to secure tissue, ensure that the tip of the grasping device is fully retracted back into the OTSC applicator cap. If the tip of the grasping device is not fully within the applicator cap there is the risk that the clip could be deployed on the shaft or tip of the device. This could result in the user not being able to remove the grasping device from the tissue or through the working channel of the endoscope.

Lock the instrument before clipping!

Turn the handwheel without interruption to apply the clip!

OTSC version type a type t type gc

Endoscope size		Ø 9.5 – 11 mm	Ø 10.5 – 12 mm	Ø 11.5 – 14 mm
Depth of cap				

Endoscopic pictures by courtesy of:

- [1] Dr. Thomas Kratt, Zentrale Endoskopieeinheit ZEE, Universitätsklinikum Tübingen, Germany
- [2] Dr. Stephan Albert, Gastroenterologie, Klinik Lindberg Winterthur, Switzerland
- [3] PD Dr. Georg Kähler, Zentrale Interdisziplinäre Endoskopie, Thorax-Zentrum, Universitätsklinikum Mannheim, Germany